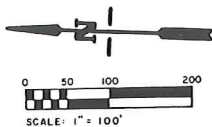


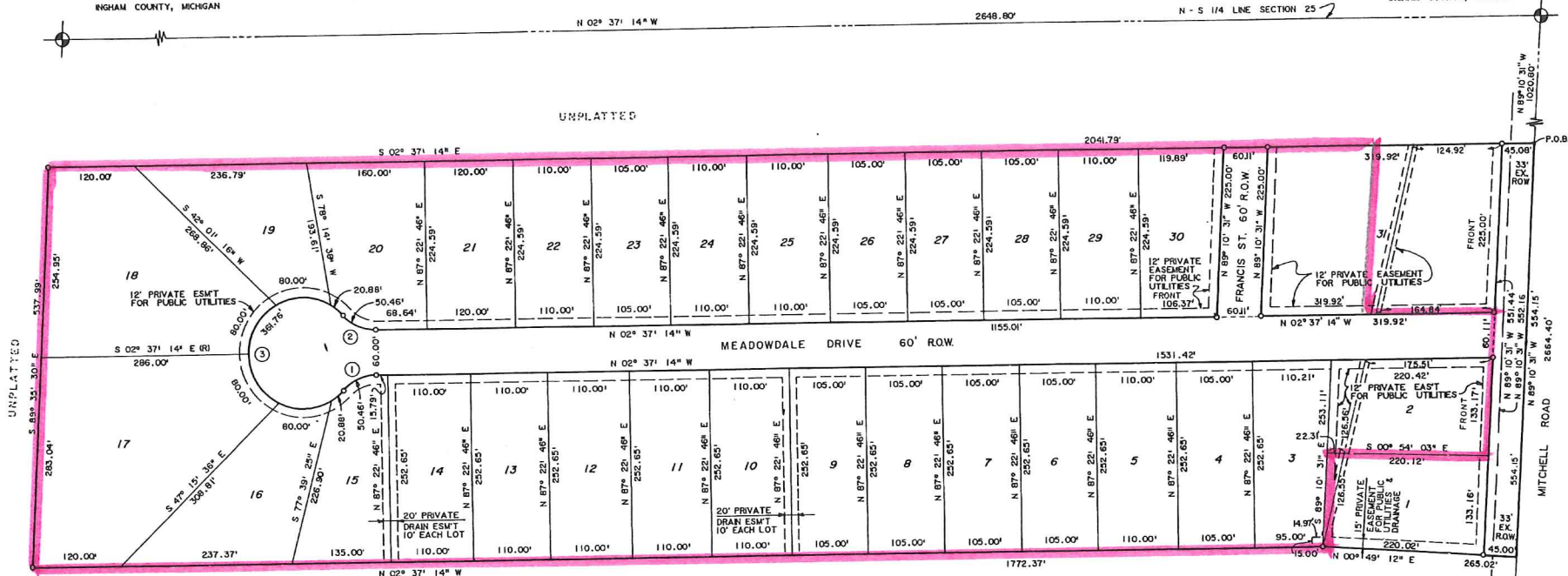
MEADOWDALE ACRES

A SUBDIVISION OF PART OF THE SOUTHWEST 1/4 OF SECTION 25
T4N, R1E, WILLIAMSTOWN TOWNSHIP, INGHAM COUNTY, MICHIGAN.



CENTER SECTION 25
T4N, R1E
WILLIAMSTOWN TWP.
INGHAM COUNTY, MICHIGAN

SOUTH 1/4 CORNER
SECTION 25
T4N, R1E
WILLIAMSTOWN TWP.
INGHAM COUNTY, MICHIGAN



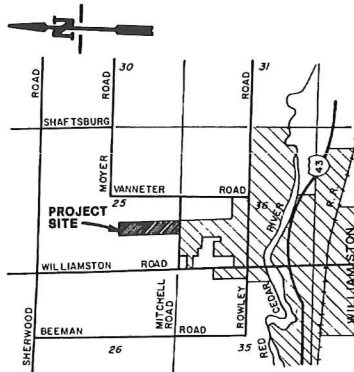
CURVE DATA

CURVE NO.	RADIUS	CENTRAL ANGLE	ARC LENGTH	CHORD BEARING	CHORD DISTANCE
1	60.00	48° 11' 19"	50.46	N 26° 42' 53" W	48.99
2	60.00	48° 11' 19"	50.46	N 21° 28' 26" E	48.99
3	75.00	276° 22' 39"	361.76	N 87° 22' 46" E	100.00

LEGEND

- ALL DIMENSIONS ARE IN FEET.
- MONUMENTS OF A 1/2" DIAMETER BAR, 36" LONG ENCASED IN CONCRETE, 4" IN DIAMETER HAVE BEEN PLACED AT ALL POINTS MARKED "O".
- LOT CORNERS HAVE BEEN MARKED WITH ORANGE PLASTIC CAPS, INSCRIBED LLS19003, ON IRON REBOD 1/2" DIAMETER BY 18" LONG.
- THE BEARING AND ORIENTATION OF THIS PLAT IS FROM THE PLAT OF OAK LEAF HILLS LIBER 40, PAGES 45, 46 & 47.
- ALL CURVE DIMENSIONS ARE ARC MEASUREMENTS.
- Ⓢ INDICATES CURVE DATA NO.
- IRI - INDICATES RADIAL LINE

This plat was prepared as required on or after the 1st day of March, 1967, by James A. Porter, a duly Licensed Professional Land Surveyor in the State of Michigan, License No. 1741, 308.



VICINITY MAP
NOT TO SCALE

SOUTHWEST CORNER
SECTION 25
T4N, R1E
WILLIAMSTOWN TWP.
INGHAM COUNTY, MICHIGAN



James A. Porter

60759