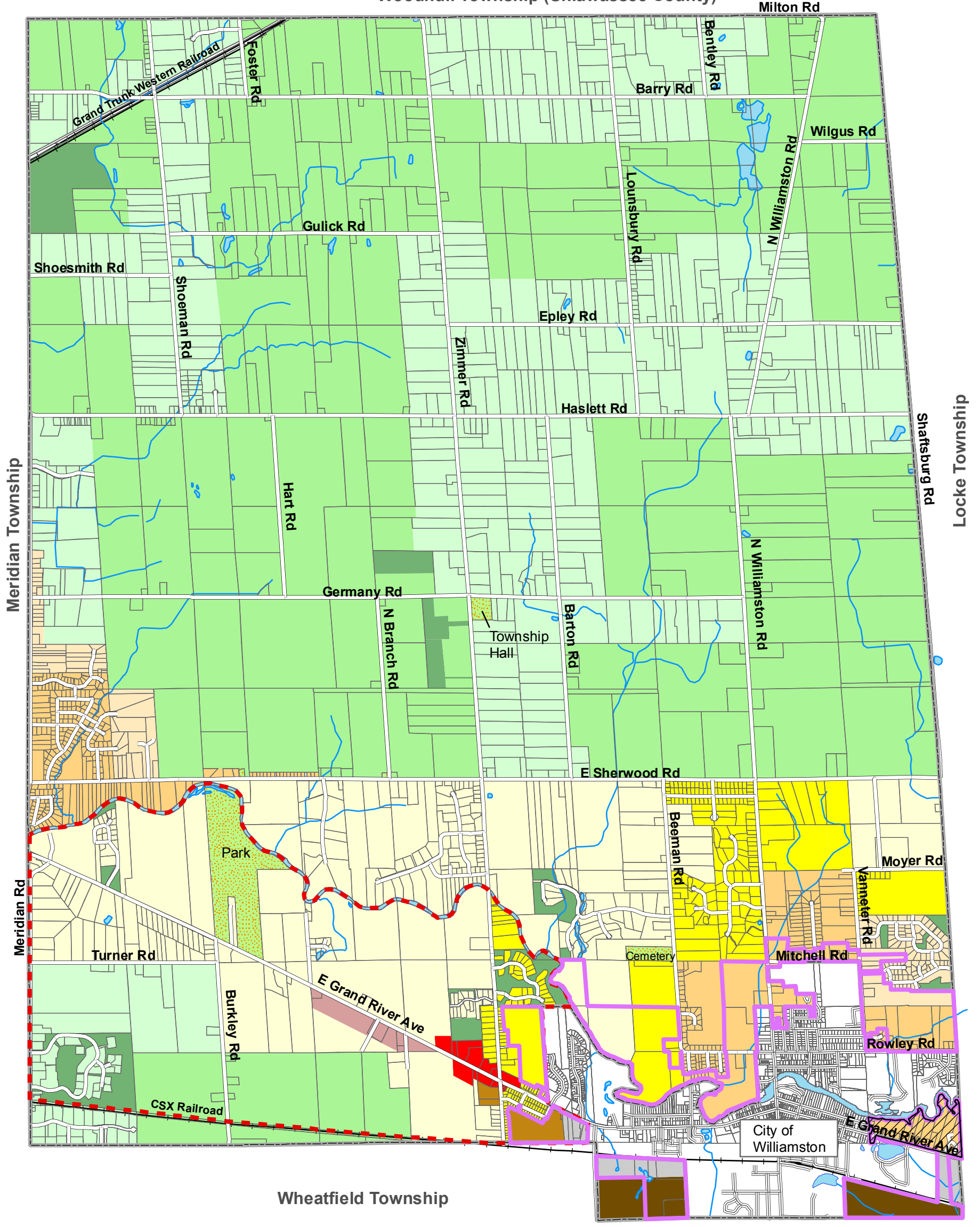


Woodhull Township (Shiawassee County)



Print date: 11/22/2006 8:11 AM C:\Process\Ingham\willtown\Future\_Land\_Use.mxd

# Future Land Use

11/14/2006

Williamstown Township,  
Ingham County, Michigan

- |  |                          |  |   |
|--|--------------------------|--|---|
|  | Agricultural Preserve    |  | Commercial  |
|  | Agriculture/ Residential |  | Research/ Technology                              |
|  | Rural Settlement         |  | Industrial  |
|  | Single Family A          |  | Public/ Semi-Public                               |
|  | Single Family B          |  | Open Space  |
|  | Single Family C          |  | Mixed-Use Overlay                                 |
|  | Multiple Family          |  | 425 Agreement Parcels/<br>Urban Services Boundary |
|  | Manufactured Housing     |  | Grand River Corridor<br>Study Area Boundary       |
|  |                          |  | Township Boundary                                 |

Parcel Data Source: Ingham County, 2004  
Data Source: Williamstown Tax Assessor, 2004

